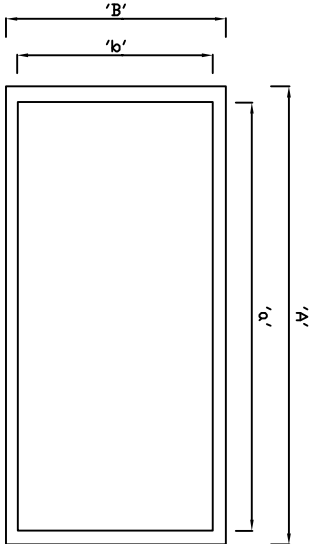
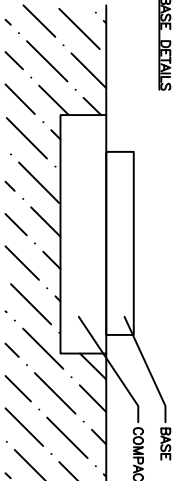


TANK DIMENSIONS



Tank Capacity 'Litres'	Tank Dimensions 'a-b' (mm)	Pilth Dimension 'A-B' (mm)	Ground Loading (Tonne)
3000	2860x1170	3160x1470	5.1
4000	2860x1170	3160x1470	5.1
5000	3370x1530	3670x1830	6.3
7500	4600x1530	4900x1830	9.3
10000	5820x1530	6120x1830	12.3

BASE DETAILS



PAVING SLAB BASE

Constructed from tightly dibbled 900mm x 600mm x 50mm thick precast concrete paving slabs to create a stable base.
See Table 1.

CONCRETE BASE

A142 steel mesh should be incorporated as reinforcement. Base should be 100mm minimum thickness. 2% concrete base laid to top of 100mm minimum of compacted hardcore to create a stable base.
See Table 2.

BASE

To be flat, smooth and level to within +/- 15mm

GROUND TYPES

It is important to establish the stability of the ground to determine the thickness of the compacted hardcore. Bases constructed of paving slabs will require a more substantial compacted hardcore base due to the increased potential of movement.
To enable identification of subsoil "ground types" the following field or site "heel test" shall be used.

HEEL TEST

Remove the top vegetated soil layer until the proposed level for the addition of hardcore is reached. A full grown man is then to stand on one leg on the heel of one foot on the exposed soil layer. The man then steps off and inspects whether or not any imprint is made.

The results of the test should be compared to the following table to determine the recommended minimum thickness of compacted hardcore.

All hardcore must be compacted using a wacker plate.

TABLE 1 – HEEL TEST FOR PAVING SLAB BASES

Subsoil	Heel Test Result	Recommended minimum thickness of compacted hardcore
Rock	No heel print	150mm
Firm	No heel print	200mm
Soft	1mm heel print	300mm
Very Soft	Deep heel print	See note below

Note:- Very Soft subsoil conditions are not suitable for bases constructed of paving slabs.

TABLE 2 – HEEL TEST FOR CAST CONCRETE BASES

Subsoil	Heel Test Result	Recommended minimum thickness of compacted hardcore
Rock	No heel print	100mm
Firm	No heel print	100mm
Soft	1mm heel print	200mm
Very Soft	Deep heel print	300mm