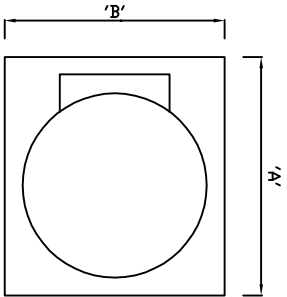
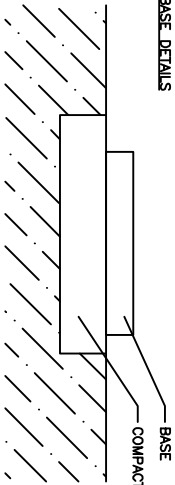


TANK DIMENSIONS



Tank Capacity 'Litres'	Dimension 'A'mm	Dimension 'B'mm	Ground Loading (Tonne)
5000	3000	3000	5.5
3500	2700	2700	4
2500 Horiz	2700	2400	3
1300 Horiz	2700	1500	2

BASE DETAILS



COMPACT HARDWARE - SEE TABLE 1 OR 2

PAVING SLAB BASE

Constructed from tightly dabled 900mm x 600mm x 50mm thick Precast concrete paving slabs to create a stable base. See Table 1.

CONCRETE BASE

A142 steel mesh should be incorporated as reinforcement. Base constructed from 100mm minimum thickness 1:2:4 concrete base laid on top of 100mm minimum of compacted hardcore to create a stable base. See Table 2.

BASE

To be flat, smooth and level to within +/- 10mm

GROUND TYPES

It is important to establish the stability of the ground to determine the thickness of the compacted hardcore. Bases constructed of paving slabs will require a more substantial compacted hardcore base due to the increased potential of movement.

To enable identification of subsoil "ground types" the following field or site "heel test" shall be used.

HEEL TEST

Remove the top vegetated soil layer until the proposed level for the addition of hardcore is reached. A full grown man is then to stand on one leg on the heel of one foot on the exposed soil layer. The man then steps off and inspects whether or not any imprint is made.

The results of the test should be compared to the following table to determine the recommended minimum thickness of compacted hardcore.

All hardcore must be compacted using a wacker plate.

TABLE 1 - HEEL TEST FOR PAVING SLAB BASES

Subsoil	Heel Test Result	Recommended minimum thickness of compacted hardcore
Subsoil	No heel print	150mm
Rock	No heel print	200mm
Firm	1mm heel print	300mm
Soft	Deep heel print	See note below

Note:- Vary Soft subsoil conditions are not suitable for bases constructed of paving slabs.

TABLE 2 - HEEL TEST FOR CAST CONCRETE BASES

Subsoil	Heel Test Result	Recommended minimum thickness of compacted hardcore
Subsoil	No heel print	100mm
Rock	No heel print	100mm
Firm	1mm heel print	200mm
Soft	Deep heel print	300mm